

More Simple, More Smart



# New AlorAir-C APP WI-FI Connection Guide

For Android and Apple users, the operation method and process are the same.



Download and install **AlorAir-C** from the App Store or Google Play Store.

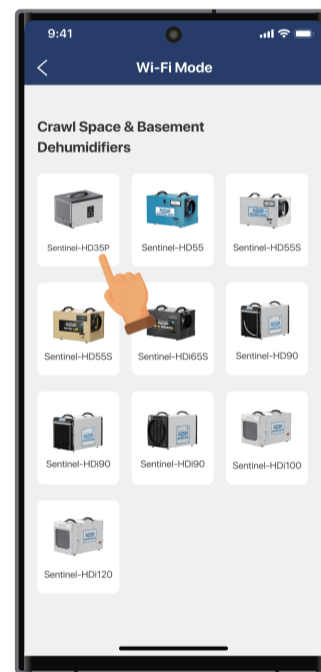
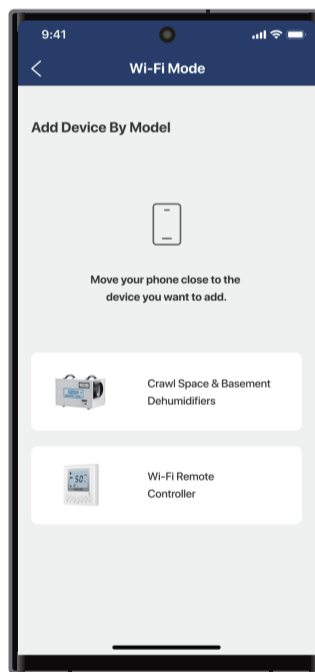


## How it works?

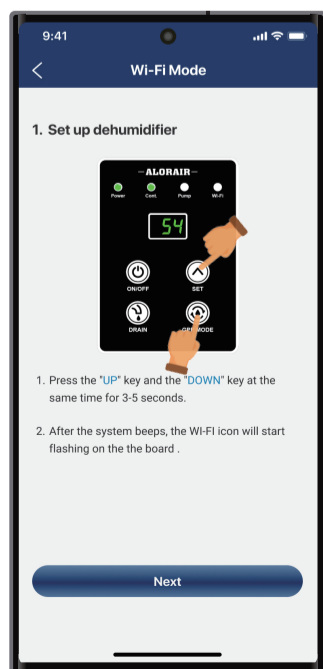
**1** Sign up and login your account.  
Can't log in? Please make sure you enter the correct password.



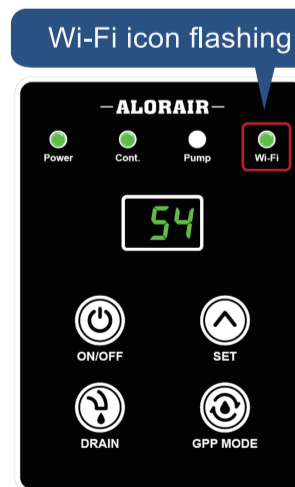
**2** Find your dehumidifier model.  
Let's take **Sentinel-HD35P** as an example.



**3** Follow the App steps to reset your device.

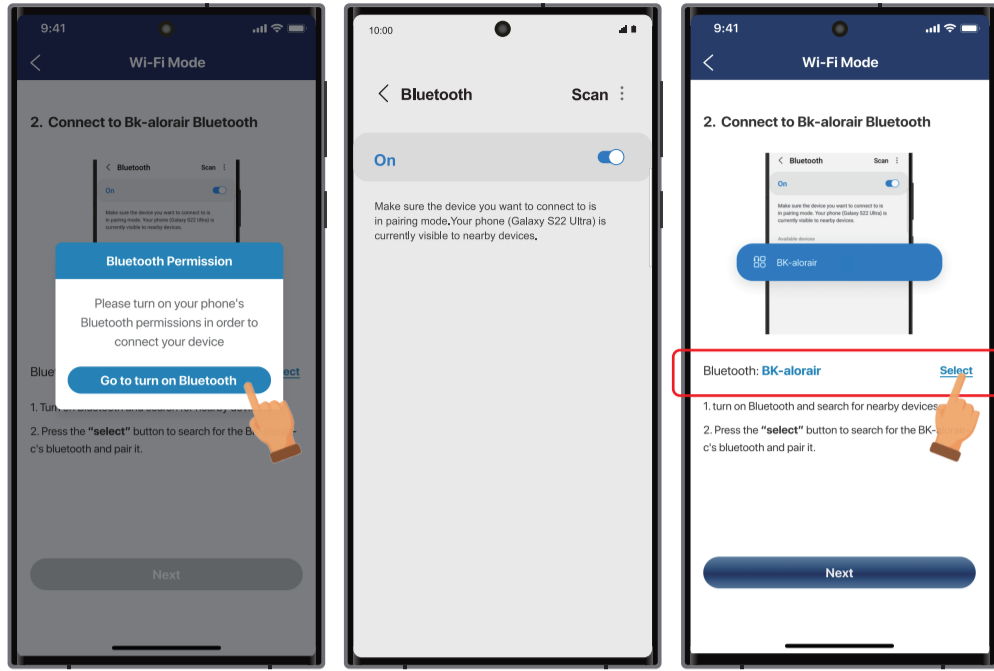


Press the "SET" key and the "GPPMODE" key at the same time for 3-5 seconds.

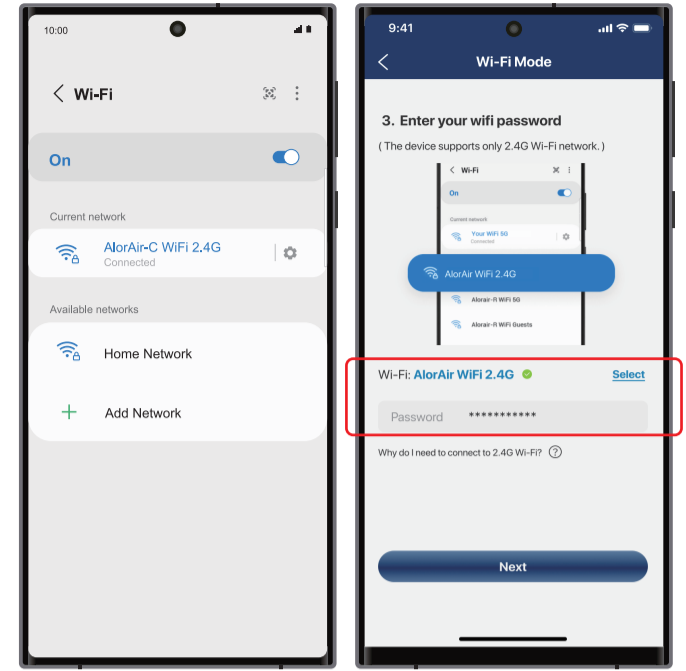


After the system beeps, the **WI-FI** icon will start **flashing** on the board.

**4** Click the “switch button” and connect to the device Bluetooth: BK-alorair. Don't go to connect Bluetooth from the system settings, it can't be found.

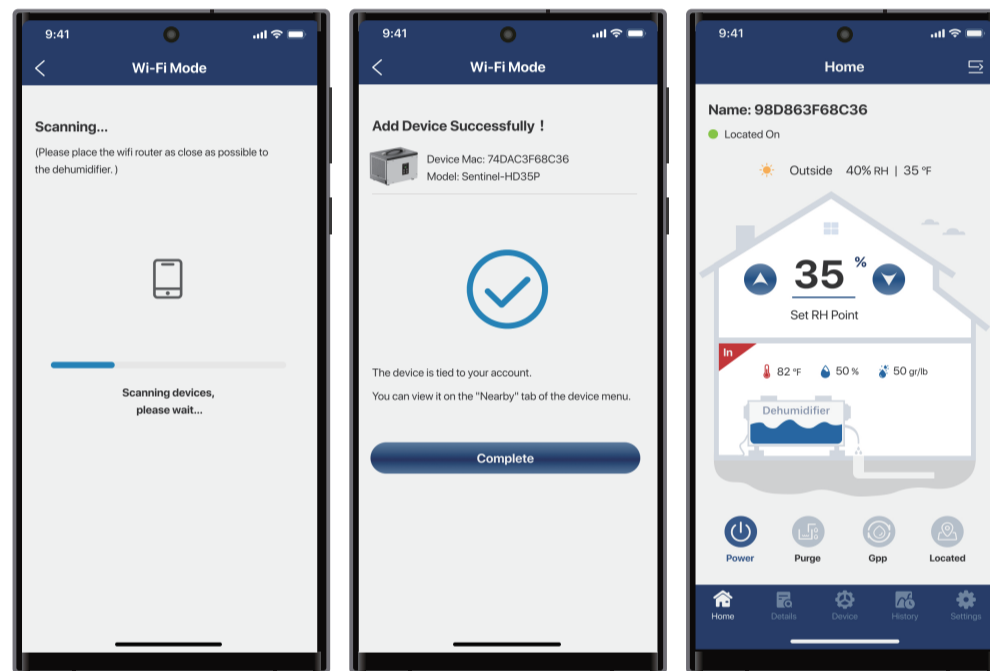


**5** Connect to the home Wi-Fi. Wrong password will cause subsequent connection failure.



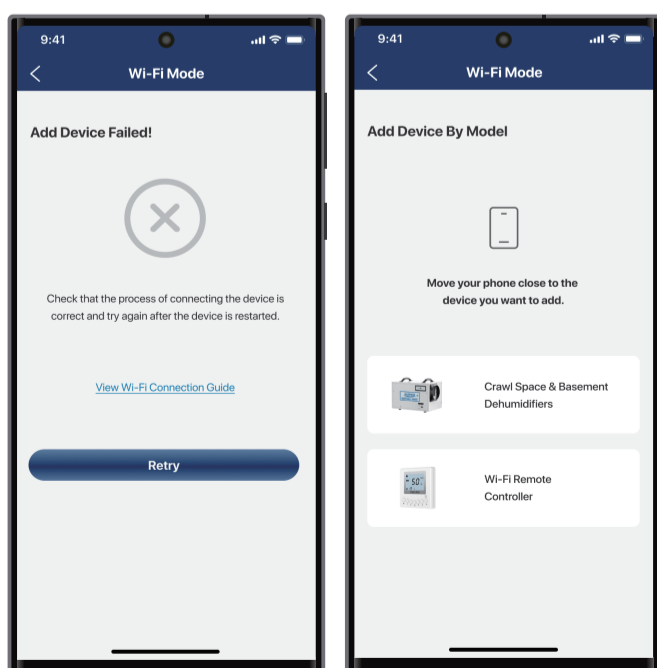
**✔ Connection Succeeded**

Once the app has finished Connection, you can start controlling the device.



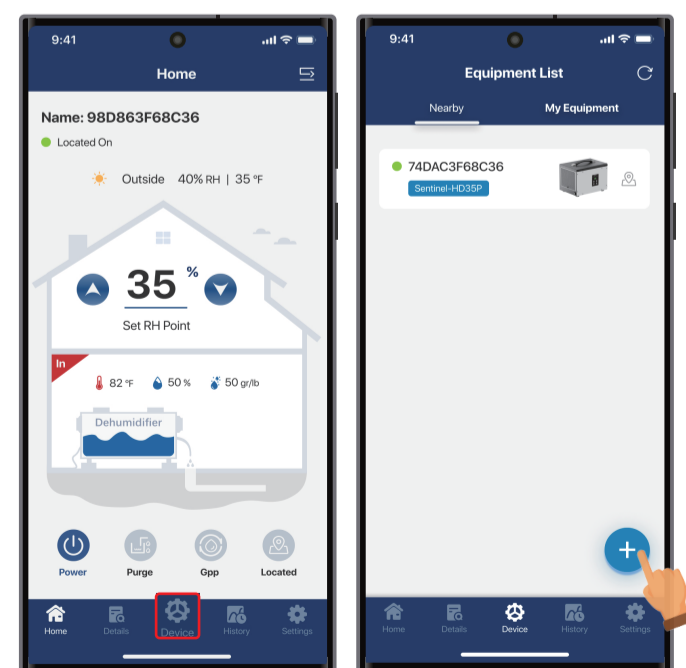
**✘ Connection Failure**

If it fails, follow the APP prompts to troubleshoot and restart the connected device.



**+ Add New Device**

Enter the device list, you can click the “+” button to continue adding new.



For the best user experience, we recommend placing your router near your dehumidifier or investing in a router with better coverage. This will ensure a stable signal while the dehumidifier is in operation.